

UPDATES

Date	Changes



Junior Pan American
Games



SAILING INSTRUCTIONS

JUNIOR PAN AMERICAN GAMES ASUNCIÓN 2025

1. RULES

Additional Rules referenced in the Notice of Race or Sailing Instructions will be published on the Official Notice Board online at the regatta website. Until the Official Notice Board URL is released, all documents, notices and announcements will be available on the Panam Sailing website (www.panamsailing.org) in the “ASU 2025 DOCUMENTS” box in the right-hand column of the home Page.

- 1.1 The regatta will be governed by the rules as defined in *the 2025-2028 Racing Rules of Sailing* (RRS) and the rules established in the Notice of Race item 1 RULES.
- 1.2 Penalties for Class Rules infringements that are not marked as **[SP]** will be at the discretion of the international jury.
- 1.3 For Windsurfing events only:
 - a) add new RRS 29.3 as follows:

“For Sprint Slalom races, when, at the starting signal, the race committee identifies a board on the course side of the starting line, the race committee shall signal a general recall.”
 - b) Decisions on protests concerning class rules: RRS 60.5(d)(1)(2) will not apply.

2. [DP] [NP] SAFETY REGULATIONS

- 2.1 The race committee will protest a boat for a breach of these safety regulations.
- 2.2 RRS 40.1 applies at all times while afloat except for the Men’s and Women’s Windsurfing and Kite Events where competitors shall wear personal flotation devices when flag Y is displayed.
- 2.2 Boats not leaving the venue for a scheduled race shall promptly notify the Sports Information Desk/Race Office through the website sailor’s account or via the Event App.
- 2.3 **[SP]** Before leaving to race on each scheduled racing day the athletes shall personally sign out through the website sailor’s account or via the Event App. Athletes may sign out from 2 hours before the scheduled time of their first warning signal of the day.
- 2.4 **[SP]** After returning ashore and up to their protest time limit, a crew member shall personally sign in through the website sailor’s account or via the Event App.
- 2.5 A boat that retires from racing shall notify the race committee before leaving the race area if possible and shall complete a retirement declaration form through the website sailor’s account or via the Event App as soon as possible after returning ashore.

3. [DP] CODE OF CONDUCT

- 3.1 Athletes and support persons shall handle any equipment provided by the Organizing Authority with proper care and seamanship, without interfering with its functionality, and in compliance with the Asunción 2025 Junior Pan American Games Equipment Regulations (ER) and not in any way interfere with the functionality of supplied media or timing equipment.

4. COMMUNICATIONS WITH COMPETITORS

- 4.1 Notices will be posted on the Official Notice Board online at the regatta website. Until the Official Notice Board URL is released, all documents, notices and announcements will be

available on the Panam Sailing website (www.PanamSailing.org) in the “ASU 2025 DOCUMENTS” box in the right-hand column of the home Page.

- 4.2 An online system that will enable paperless submissions of hearing requests, scoring inquiries and declarations will be accessible through the Official Notice Board. In case of a system failure, hearing request and other paper forms will be available at the Sports Information Desk/Race Office in the venue and delivered at the same location.
- 4.3 Signals ashore will be displayed from the flagpole in the venue, in front of the Sports Information Desk/Race Office.
- 4.4 When flag AP is displayed ashore, ‘1 minute’ is replaced with the times in minutes shown below in the Race Signal AP. This changes Race Signal AP:

Area	Race Signal AP not less than
A	30 minutes
B	45 minutes

- 4.5 **[SP] [NP]** A boat shall not leave her assigned berthing place until flag D is displayed ashore. The warning signal will be made not less than the time in minutes shown in the table in Sailing Instruction 4.4 after flag D is displayed or not before the schedule time, whichever is later.
- 4.6 **[DP]** When flags AP over H or N over H are displayed from a race committee vessel, all boats shall immediately return ashore and shall wait there for further signals. (This changes Race Signals AP over H and N over H.)
- 4.7 For the Men’s Kite Event: To indicate that competitors may return to shore to change equipment, flag K displayed afloat and ashore with two sounds means ‘Races not started are postponed. The warning signal will be made not less than 15 minutes after flag K was displayed unless at that time the race is postponed again or abandoned.’
- 4.8 For the Windsurfing Events: Depending on which format will be sailed (Course Racing or Sprint Slalom) the race committee will display the format flag ashore at least 30 minutes before the warning signal or afloat not later than the warning signal.

Format	Flag
Course racing	Red Flag with iQFOiL logo
Sprint racing	Grey Flag with iQFOiL logo

5. CHANGES TO SAILING INSTRUCTIONS

- 5.1 Any change to the schedule of races will be posted on the Official Notice Board before 20:00 on the day before it will take effect.
- 5.2 Any change to the Sailing Instructions other than a change to the schedule of races will be posted before 11:00 on the day it will take effect.
- 5.3 Any changes to the Sailing Instructions shall be approved by the World Sailing Technical Delegate.

6. RACE AREAS AND FIELD OF PLAY

- 6.1 The Field of Play including the race areas is shown in the Sailing Instruction Addendum A.

7. SCHEDULE OF RACES AND RACE AREA ASSIGNMENTS

- 7.1 The race schedule, including the time of the first warning signals and assignment of events to race areas, is shown in Sailing Instruction Addendum B.
- 7.2 The race committee will post an update to Sailing Instruction Addendum B on a daily basis, no later than 20:00 on the day prior.
- 7.3 The race committee may reassign an event to any race area no later than 2 hours before the scheduled starting signal. However:
 - a) when flag AP is displayed ashore, the race area may be changed by posting a notice at least 15 minutes before the AP is removed; and
 - b) when flag AP is displayed afloat, the race area may be changed. The race committee will display flag L over the event(s) flag(s) and move to the new race area.
- 7.4 Races not sailed on the scheduled day may be sailed on a following day at the discretion of the race committee.
- 7.5 For all events to alert boats that a race or sequence of races will begin soon, the orange starting line flag will be displayed with one sound at least two minutes before a warning signal is made.
- 7.6 The warning signal for each succeeding race will be made as soon as practicable.

8. COURSES

- 8.1 The diagrams in Sailing Instruction Addendum C show the courses, the course designations, the approximate angles between legs, the order in which marks are to be passed, and the side on which each mark is to be left.
- 8.1 No later than the warning signal, the race committee starting vessel will display the course designation.

9. MARKS

- 9.1 All marks will be race committee vessels or cylindrical inflatable.
- 9.2 Course, start, finish and new marks will be as follows:

Race Area	Course Marks	New Mark	Start and finish line
A	Green	Blue	RC vessel or orange
B	Orange	Yellow	RC vessel or orange

- 9.3 Protector mark for Kite courses will be yellow.
- 9.4 In the event that a gate mark is missing and has not been replaced with an object displaying flag M, the remaining mark shall be rounded to port.

10. EVENT FLAGS

- 10.1 Event flags will be class insignia on the following background:

Event	Insignia	Background colour
Men's Windsurfing	iQFOiL	White
Women's Windsurfing	iQFOiL	Blue
Men's Kite	IKA	White
Men's Dinghy	ILCA 7	White
Women's Dinghy	ILCA 6	Green

11. THE START

11.1 The starting line will be between a staff displaying an orange flag on the race committee vessel and either:

- a) the course side of the inflatable starting line mark, or
- b) a staff displaying an orange flag on the race committee vessel at the other end.

11.2 **[DP]** A buoy may be attached to the race committee starting vessel anchor line just below daggerboard depth. Boats shall not pass between this buoy and the race committee starting vessel at any time. This buoy is part of the race committee starting vessel ground tackle.

11.3 **[DP]** When a starting sequence is in progress, boats whose warning signal has not been made shall avoid the starting area. The starting area is defined as the area 75 meters (250 for Kite) from the starting line and marks in all directions.

11.4 Formula Kite and Windsurfing events start sequence will be as follows:

Minutes before starting signal	Visual signal	Sound signal	Means
3	Event flag	One	Warning Signal
2	Uniform or black flag	One	Preparatory Signal
1	Uniform or black flag removed	One long	1 minute
0	Event flag removed	One	Starting Signal

11.5 The warning signal for each succeeding race will be made as soon as practicable.

12. COURSE CHANGES

12.1 To change the next leg of the course the race committee will:

- a) lay a new mark;
- b) move the finishing line; or
- c) move the original mark.

When a new mark is laid, the original mark will be removed as soon as possible. When in a subsequent change a new mark is replaced, it will be replaced by an original mark.

12.2 When Mark 1 has been moved or replaced, Mark 1a is no longer a mark of the course. It will be removed as soon as practicable. This changes RRS 33.

12.3 Courses will not be shortened. This changes RRS 32.

13. THE FINISH

- 13.1 The finishing line will be between a staff displaying a blue flag on the race committee vessel and either:
- a) the course side of the inflatable finishing mark, or
 - b) a staff displaying a blue flag on the race committee vessel at the other side.

14. TIME LIMITS AND TARGET TIMES

14.1 Time limits and target times in minutes are as follows:

Event		Time Limit	Mark 1 Time Limit	Finish Window	Target Time
Windsurfing (M/W)	Course	23	8	6	16
	Sprint Slalom	8	1:30	4	4 - 5
	Upwind Sprint	12	5	5	7
Other Events	Kite (M)	20	6	6	12
	Dinghy (M/W)	60	25	15	40

- 14.2 Except in the Windsurfing events, if no boat passes Mark 1 before the Mark 1 Time Limit the race will be abandoned.
- 14.3 For Windsurfing events only, races shall be abandoned when:
- a) the whole fleet is not foiling for more than 20 seconds;
 - b) In Sprint Slalom 2 boards did not pass mark 1 within 90 seconds after the start signal;
 - c) In Upwind Sprint 2 boards did not pass mark 1 within 5 minutes after the start signal;
 - d) Two boards did not finish within the time limit for the race;
 - e) In course racing:
 - i) One board, did not pass mark 1 within 8 minutes after the start signal;
 - ii) One board, did not finish within the time limit for the race.
- 14.4 Boats failing to finish within the time stated in the Finish Window after the first boat sails the course and finishes will be scored Did Not Finish (DNF). This changes RRS 35, A4 and A5.
- 14.5 Failure to meet the target times will not be grounds for redress. This changes RRS 61.4(b)(1).

15. [DP] EQUIPMENT AND EQUIPMENT INSPECTION

- 15.1 The Asunción 2025 Junior Pan American Games Equipment Regulations (ER) govern all equipment and equipment inspection matters.
- 15.2 A boat or its equipment may be inspected at any time for compliance with the class rules, Notice of Race and Sailing Instructions.
- 15.3 When instructed by a race official on the water, a boat shall proceed to a designated area for inspection.
- 15.4 If equipment is required to be registered by the rules, only that registered equipment shall be used.

16. OFFICIAL VESSELS

16.1 Official vessels will be marked with flags as follows:

Vessel	Flag
International Jury	Blue with 'JURY' in white
Panam Sailing	Panam Sailing Flag
Press	Green with "Press" in white
Technical Delegate	White with 'DTI' in green
Safety	Yellow with 'SEG' in black
Race Committee	White with "CR" in black
Technical Committee	White with "M" in black

16.2 A boat may not request redress based on the actions by any official vessel, drone or helicopter. This changes RRS 61.1(a).

17. SCORING

17.1 A boat starting later than the number of minutes after her starting signal in the following table will be scored Did Not Start (DNS). This changes RRS A4 and A5.

Event		Starting Window
Men's and Women's Dinghy		4
Windsurfing (M/W)	Course	2
	Sprint Slalom	1
Kite		1

17.2 A boat's series score will be the total of her race scores excluding her worst scores as follows:

Event	Scores excluded based on the number of races completed		
	0 scores excluded	1 score excluded	2 scores excluded
Dinghy	1 - 3	4 or more	not apply
Windsurfing	1 - 2	3 - 7	8
Kite	1 - 2	3 - 6	7 or more

17.3 To request a correction of an alleged error in posted race or series results, a boat may complete and submit a scoring inquiry through the website sailor's account or via the Event App within the time limit in SI 18.2.

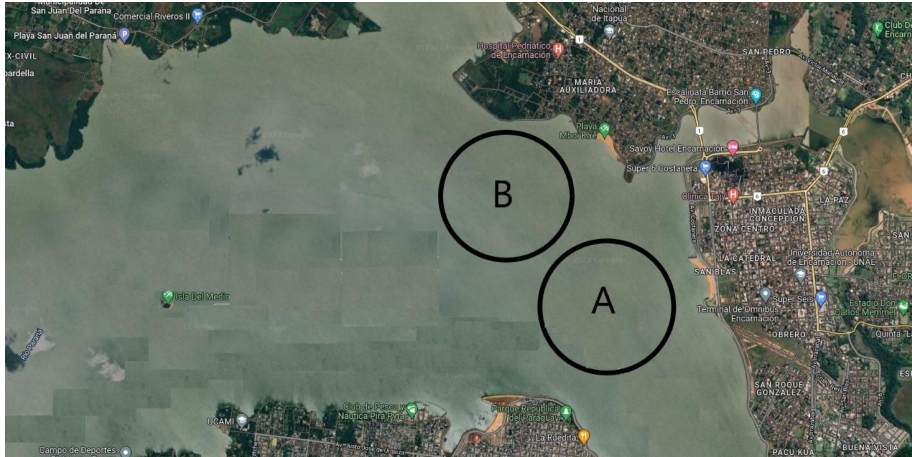
18. PROTESTS, PENALTIES AND REQUESTS FOR HEARING REQUESTS AND PENALTIES

18.1 Requests for a hearing should be lodged electronically via the form available on the Official Notice Board within the appropriate time limit. Submissions into this system will be considered as delivered to the Sports Information Desk/Race Office. Once delivered, a hearing will be automatically listed on the list of pending hearings. If this does not show,

then the protest/request has not been received. If the electronic system is unavailable, Hearing Request Forms will be available at the Sports Information Desk/Race Office in the venue and may be submitted there within the appropriate time limit.

- 18.2 The protest time limit for each fleet is 60 minutes after either:
 - a) the last boat in the fleet has finished the last race of the day, or
 - b) the race committee signals no more racing today for this fleet, whichever is the later.
- 18.3 A request for redress based on an incident identified in a scoring inquiry will meet the time limit if:
 - a) the scoring inquiry was submitted within the time limit specified in RRS 61.2(b) as changed by SI 18.2; and
 - b) the request for redress is delivered as soon as reasonably possible after being notified of the race committee's response to the scoring inquiry. The response by the race committee will be through the online system. This changes RRS 61.2(b).
- 18.4 Notices will be posted within 30 minutes of the protest time limit to inform competitors of hearings in which they are parties or named as witnesses. Hearings will be held in the stated room beginning at the time posted. Hearings may be scheduled to begin up to 30 minutes before the protest time limit.
- 18.5 A list of boats that have been penalized under Appendix P for breaking RRS 42 and under Sailing Instruction 18.7 will be posted on the Official Notice Board.
- 18.6 Penalties for breaches of the class rules, RRS 50.1 or rules in the NoR and SIs marked [DP], or [SP] should the case go to a hearing, are at the discretion of the international jury and may be less than disqualification.
- 18.7 For breaches of a rule marked **[SP]**, or listed in the list of standard penalties, the race committee or technical committee may apply a standard penalty without a hearing or a discretionary penalty may be applied by the international jury with a hearing. A list of these breaches and the associated standard penalties will be posted on the Official Notice Board. However, the race committee or technical committee may protest a boat if it considers a standard penalty is inappropriate. A boat that has been penalised with a standard penalty shall neither be protested by another boat for the same incident nor may a boat request redress for this committee action. This changes RRS 60.1, 61.1(a) and A5.
- 18.8 When a penalty is given under Sailing Instructions 18.6 or 18.7 before a race is started, the penalty will remain if that race is restarted or resailed. This changes RRS 36.

ADDENDUM A - RACE AREAS



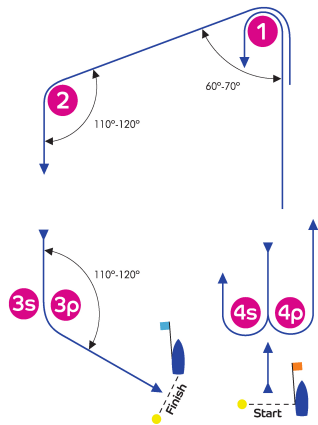
AREA	CENTER	DIAMETER
A	27° 20.275' S 55° 53.080' W	1 nm
B	27° 19.630' S 55° 53.840' W	1 nm

ADDENDUM B - Competition Schedule

Event	15 Aug. - Day 1		16 Aug. - Day 2		17 Aug. - Day 3		18 Aug - Day 4	
	Area / Warning	#	Area / Warning	#	Area / Warning	#	Area / Warning	#
Windsurfing (M)	A / 14:00	3	A / 12:00	3	A / 14:00	2	Reserve	TBA
Windsurfing (W)	A / 14:10	3	A / 12:10	3	A / 14:10	2	Reserve	TBA
Kite (M)	A / 12:00	3	A / 14:00	3	A / 12:00	2	Reserve	TBA
Dinghy (M)	B / 12:00	2	B / 12:00	2	B / 12:00	2	Reserve	TBA
Dinghy (W)	B / 12:10	2	B / 12:10	2	B / 12:10	2	Reserve	TBA

ADDENDUM C - Course Diagrams

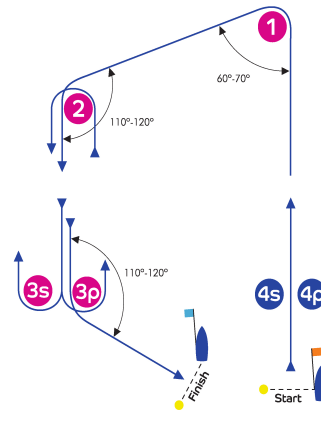
I



Course:

Signal	Mark Rounding Order
I2	Start - 1 - 4s/4p - 1 - 2 - 3p - Finish
I3	Start - 1 - 4s/4p - 1 - 4s/4p - 1 - 2 - 3p - Finish
I4	Start - 1 - 4s/4p - 1 - 4s/4p - 1 - 4s/4p - 1 - 2 - 3p - Finish

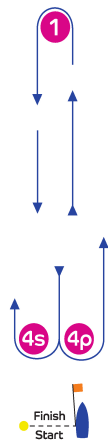
O



Course:

Signal	Mark Rounding Order
O2	Start - 1 - 2 - 3s/3p - 2 - 3p - Finish
O3	Start - 1 - 2 - 3s/3p - 2 - 3s/3p - 2 - 3p - Finish
O4	Start - 1 - 2 - 3s/3p - 2 - 3s/3p - 2 - 3s/3p - 2 - 3p - Finish

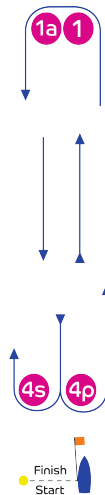
L



Course:

Signal	Mark Rounding Order
L2	Start - 1 - 4s/4p - 1 - Finish
L3	Start - 1 - 4s/4p - 1 - 4s/4p - 1 - Finish
L4	Start - 1 - 4s/4p - 1 - 4s/4p - 1 - 4s/4p - 1 - Finish

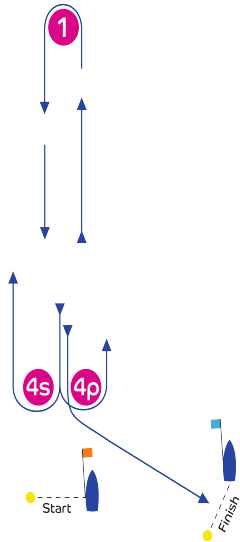
LA



Course:

Signal	Mark Rounding Order
LA2	Start - 1 - 1a - 4s/4p - 1 - 1a - Finish
LA3	Start - 1 - 1a - 4s/4p - 1 - 1a - 4s/4p - 1 - 1a - Finish
LA4	Start - 1 - 1a - 4s/4p - 1 - 1a - 4s/4p - 1 - 1a - 4s/4p - 1 - 1a - Finish

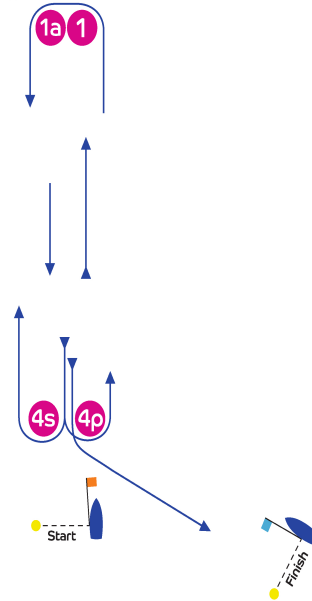
LR



Course:

Signal	Mark Rounding Order
LR2	Start - 1 - 4s/4p - 1 - 4p - Finish
LR3	Start - 1 - 4s/4p - 1 - 4s/4p - 1 - 4p - Finish
LR4	Start - 1 - 4s/4p - 1 - 4s/4p - 1 - 4s/4p - 1 - 4p - Finish

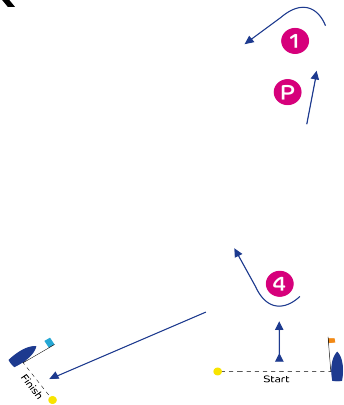
LRA



Course:

Signal	Mark Rounding Order
LRA2	Start - 1 - 1a - 4s/4p - 1 - 1a - 4p - Finish
LRA3	Start - 1 - 1a - 4s/4p - 1 - 1a - 4s/4p - 1 - 1a - 4p - Finish
LRA4	Start - 1 - 1a - 4s/4p - 1 - 1a - 4s/4p - 1 - 1a - 4s/4p - 1 - 1a - 4p - Finish

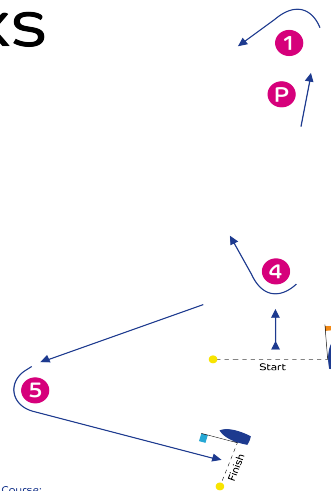
X



Course:

Signal	Mark Rounding Order
X1	Start - Pp - 1p - Pp - 4s - Finish
X2	Start - Pp - 1p - Pp - 4s - Pp - 1p - Pp - 4s - Finish
X3	Start - Pp - 1p - Pp - 4s - Pp - 1p - Pp - 4s - Pp - 1p - Pp - 4s - Finish

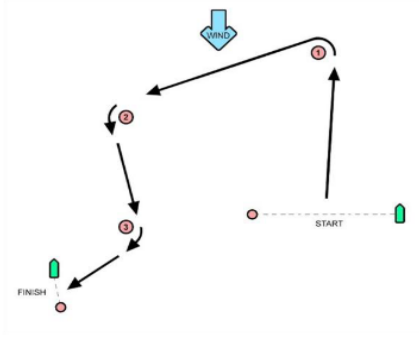
XS



Course:

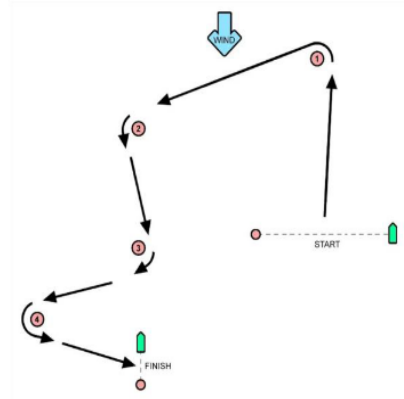
Signal	Mark Rounding Order
XS1	Start - Pp - 1p - Pp - 4s - Sp - Finish
XS2	Start - Pp - 1p - Pp - 4s - Pp - 1p - Pp - 4s - Sp - Finish
XS3	Start - Pp - 1p - Pp - 4s - Pp - 1p - Pp - 4s - Pp - 1p - Pp - 4s - Sp - Finish

US3



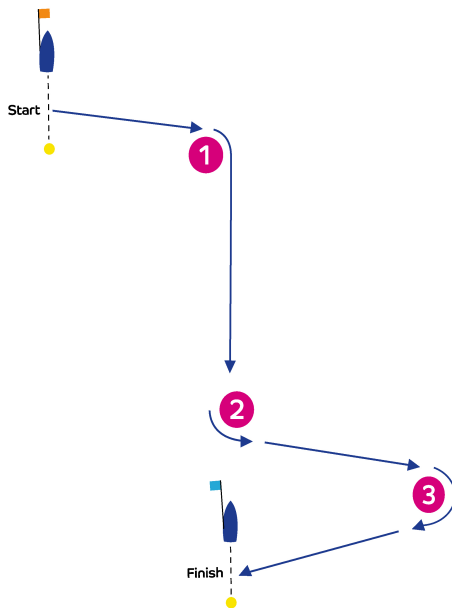
Signal	Mark rounding order
US3	Start-1- 2-3-Finish

US4



Signal	Mark rounding order
US4	Start-1- 2-3-4-Finish

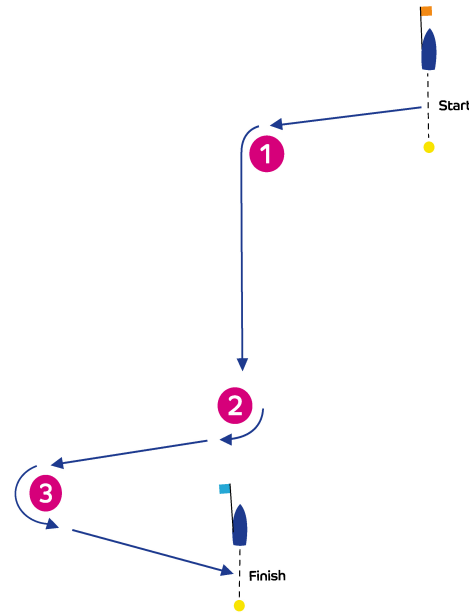
PD



Course:

Signal	Mark Rounding Order
PD3	Start - 1s - 2p - 3s - Finish

SD



Course:

Signal	Mark Rounding Order
SD3	Start - 1p - 2s - 3p - Finish