



# SAILING INSTRUCTIONS

31 July - 11 August 2019  
Paracas - Perú



# 1. RULES

Additional Rules referenced in the Notice of Race or Sailing Instructions will be published on the Pan American Sailing Federation website (at <http://panamsailing.org>) or on the Lima 2019 site (at <http://www.lima2019.pe>).

- 1.1 The regatta will be governed by the rules as defined in The 2017-2020 Racing Rules of Sailing (RRS), published by World Sailing (WS). Other documents under RRS Definition: Rule (g) include:
  - a) The Pan American Sports Organization (PASO) Constitution. See [https://www.panamsports.org/downloads/pdf/AMENDED\\_CONSTITUTION\\_2017.pdf](https://www.panamsports.org/downloads/pdf/AMENDED_CONSTITUTION_2017.pdf)
  - b) The Pan American Games Regulation. See <http://www.panamsports.org/downloads/pdf/pan-american-games-regulations-2018.pdf>
  - c) Numeric Entries Guide and Nominal Entries Guide – available at NOCs Extranet.
  - d) The Qualification System (QS) for 2019 Pan American Games Sailing Competition. See <http://panamsailing.org>
  - e) [DP] The Lima 2019 Support Team Regulations (STR).
  - f) [DP] [SP] The Lima 2019 Equipment Regulations (ER).
  - g) [DP] The Lima 2019 Competition Area Regulation (CAR).
  - h) The Qualification System for the Tokyo 2020 Olympic Sailing Competition. See: [www.sailing.org/tokyo2020.php](http://www.sailing.org/tokyo2020.php)
- 1.2 No national authority prescriptions will apply.
- 1.3 [DP] Class rules will apply except any class rule dealing with the conditions for organizing and running class championships shall not apply.
- 1.4 Appendix P, Special Procedures for Rule 42. In RRS P1, change 'sail number' to 'national letters'.
- 1.5 In RRS 30.4, change 'sail number' to 'national letters'.
- 1.6 In RRS 44.2 insert after the first sentence: However, if Mark 1A is set, a boat may delay taking a penalty for an incident in the zone around Mark 1 or on the leg between Mark 1 and Mark 1A, until she has passed Mark 1A.
- 1.7 For the Men's Skiff, Women's Skiff and Mixed Multihull, RRS 44.1 and RRS P2.1 are changed so that the Two-Turns Penalty is replaced by the One-Turn Penalty.



- 1.8 The current version of the World Sailing Addendum Q, Umpire Fleet Racing, is published on the following link: [http://sailing.org/tools/documents/AddendumQversion20190101-\[24621\].pdf](http://sailing.org/tools/documents/AddendumQversion20190101-[24621].pdf)
- 1.9 In all rules governing this regatta, both "athlete" and "competitor" mean a person competing in the event. The term "support team" means Support Person as defined in RRS Definitions.
- 1.10 In all rules governing this regatta:
- [DP] denotes a rule for which the penalty is at the discretion of the International Jury.
- [SP] denotes a rule for which a standard penalty may be applied by the Race Committee or Technical Committee without a hearing or a discretionary penalty applied by the International Jury with a hearing.
- [NP] denotes a rule that shall not be grounds for protests by a boat. This changes RRS 60.1(a); and
- The term 'scheduled' means: As originally scheduled unless amended by a later notice to competitors.
- 1.11 Decisions of the International Jury will be final as provided in RRS 70.5.
- 1.12 RRS 63.7 is changed to read: 'If there is a conflict between rules, the protest committee shall resolve that conflict in the manner that it believes will provide the fairest result for all boats affected.'
- 1.13 For Kiteboarding event, any change to the rules are detailed in Addendum D. If there is a conflict between the Addendum D and these rules, the Addendum D will take precedence.
- 1.14 If there is a conflict between languages the language of the original version of the relevant document will take precedence.
- 1.15 [NP] The infringement of RRS Appendix G, IDENTIFICATION ON SAILS, shall not be grounds for protest by a boat.

## 2. [DP] [NP] SAFETY REGULATIONS

- 2.1 Athletes (except Men and Women Windsurfers) shall wear personal flotation devices at all times while afloat, except briefly while changing or adjusting clothing or personal equipment. Men's and Women's Windsurfer events athletes shall wear personal flotation devices when flag Y is displayed.



- 2.2 Boats not leaving the harbour for a scheduled race shall promptly notify the Sports Information Desk.
- 2.3 [SP] Before leaving to race on each scheduled day, athletes shall personally deposit their accreditation at the place that will be informed on the Official Notice Board.
- 2.4 [SP] Within 30 minutes after returning ashore, but not later than protest time limit for that event, athletes shall personally collect their accreditations at the place that will be informed on the Official Notice Board.
- 2.5 [SP] Before leaving shore to race, an athlete or support team member shall collect their tracking module at Sport Equipment Office.
- 2.6 [SP] When no more races are scheduled for a boat on that day, a boat representative shall deposit their tracking module at Sport Equipment Office within the protest time limit.
- 2.7 [SP] A boat that retires from racing shall notify the Race Committee before leaving the racing area if possible and shall complete a retirement declaration form at the Sports Information Desk as soon as possible after returning ashore.

## 3. [DP] CODE OF CONDUCT

- 3.1 Athletes shall comply with any reasonable request from a regatta official.
- 3.2 Athletes shall handle any equipment provided by the organizing authority with proper care and seamanship, without interfering with its functionality, and in compliance with the ER.
- 3.3 Athletes shall not in any way interfere with the functionality of supplied media or results equipment.
- 3.4 [SP] Boats not racing shall avoid the area where boats are racing and of any official boats.
- 3.5 [SP] Boats that are on a course area to which they are not assigned shall avoid the area where boats are racing and any official boat is operating.



# 4. COMMUNICATIONS WITH ATHLETES

- 4.1 Notices will be posted on the official notice board located close to the Sports Information Desk.
- 4.2 Notices will also be posted at [www.panamsailing.org](http://www.panamsailing.org). Failure to post a notice on the website will not be grounds for redress. This changes RRS 62.
- 4.3 When a visual signal is displayed over an Event flag, the signal applies only to that Event. This changes the Race Signals preamble.
- 4.4 Signals ashore will be displayed on the official flagpole located close to the venue pontoon but the Men's Windsurfer and Women's Windsurfer official flagpole will be inside their launching area, on the beach.
- 4.5 When flag AP is displayed ashore, '1 minute' is replaced with the times in minutes shown below in the race signal AP.

Race Area	Warning signal not less than (min.)
Medal Race	30
Antisuyo and Bi Suyo	45
Contisuyo	60

- 4.6 [SP][NP] A boat shall not leave its assigned place ashore until flag D is displayed. The warning signal will be made not less than the time in minutes shown below after flag D is displayed or not before the schedule time, whichever is later.

Race Area	Warning signal not less than (min.)
Medal Race	30
Antisuyo and Bi Suyo	45
Contisuyo	60

- 4.7 Race Committees VHF channels for each of the race areas will be posted on the Official Notice Board no later than 1500 on 02 August 2019.



# 5. CHANGES TO SAILING INSTRUCTIONS

- 5.1 Except for changes to the schedule of races and course assignments, changes to the Sailing Instructions will be posted no later than two hours before the scheduled time of the first race affected.
- 5.2 Any changes to the Sailing Instructions will be approved by the World Sailing Technical Delegate.

# 6. FORMAT OF RACING

- 6.1 The format for each Event consists of an opening series and a medal race.
- 6.2 Opening Series:  
For the opening series of each event the number of races scheduled is as follows:

Event*	Number of races	Maximum Races per Day
Men's Dinghy Women's Dinghy Open Dinghy Mixed Two Person Dinghy Mixed Three Person Dinghy	10	3
Men's Windsurfer Women's Windsurfer	12	3
Men's Skiff Women's Skiff Mixed Multihull	12	4

\* Open means that the crew may be all male, all female, or a combination of the two.  
Mixed means that the crew must include at least one male and at least one female.

- 6.3 Medal Race
  - 6.3.1 A medal race will be scheduled for each event with 5 or more opening series races completed.
  - 6.3.2 After the opening series, the five best places of all the Events, except



Men's Dinghy, Women's Dinghy and Open Dinghy, will be assigned to compete in the medal race. Fifty percent (0,5 rounded upward) of the best places in the opening series of the Events Men's Dinghy, Women's Dinghy and Open Dinghy will proceed to the medal race.

- 6.3.3 Initial assignments to a medal race will be based on the ranking available at 2000 the day before a medal race. Any changes to the initial assignments will be posted by 0800 on the day of the medal race. The International Jury may extend these time limits.

## 7. [DP] COURSE AREAS AND COMPETITIONS AREAS

- 7.1 The course areas are shown in Sailing Instructions Addendum A. The Competition Area Regulations will define the competition areas.
- 7.2 All boats shall remain in the competition areas at all times whilst afloat. No part of a boat shall cross the boundary. While a boat is racing, the boundary ranks as an obstruction.

## 8. SCHEDULE OF RACES AND COURSE AREA ASSIGNMENTS

- 8.1 The provisional race schedule, including the time of the first warning signals and assignment of Events to course areas will be posted as Sailing Instructions Addendum B no later than 22 July 2019. An update to SI Addendum B will be posted daily no later than 2000 on the previous evening of any race affected.
- 8.2 The Race Committee may reassign an event to any course area no later than two hours before the scheduled starting signal. However;
- 8.2.1 When flag AP is displayed ashore, the course area may be changed until 15 minutes before the AP is removed; and
- 8.2.2 When flag AP is displayed afloat, the course area may be changed. A race committee boat will display flag L over the event(s) flag and



move to the new Course Area.

- 8.3 Races not sailed on the scheduled day may be sailed on a following day at the discretion of the Race Committee, including sailing an opening series race on the provisional medal race/medal series or reserve medal race/medal series day.
- 8.4 A medal race/medal series will not be scheduled on the same day as an opening series race for that event.
- 8.5 On August 08, 09, 10 and 11 no warning signal will be made after 1630.

## 9. THE COURSES

- 9.1 Courses will be windward/leeward, trapezoid or "X". The diagrams in Addendum C show the courses, the course designations, the approximate angles between legs, the order in which marks are to be passed, and the side on which each mark is to be left.
- 9.2 No later than the warning signal, the race committee starting vessel will display the course signal and, except for Open Kiteboarding, Men's Windsurfer and Women's Windsurfer events, the approximate compass bearing of the first leg.

## 10. MARKS

- 10.1 A full description of shape and colour of mark 1, 2, 3, 4, P, offset, or associated gate marks, S1, S2, S3, new marks as provided in 13.1 and inflatable starting and finishing marks for each area will be posted on the Official Notice Board no later than 1500 on August 02, 2019.
- 10.2 Offset marks will be the same as Mark 1, 2, 3 and 4.
- 10.3 Marks S1, S2, and S3, or associated gates, will be same as Marks 1, 2, 3 and 4.
- 10.4 The starting and finishing line marks will be race committee vessels or inflatable marks.





# 11. EVENT FLAGS

Event flags will be class insignia on the following background:

Event	Class Insignia	Background Colour
Men's Windsurfer	RS:X	White
Women's Windsurfer	RS:X	Pink
Men's Dinghy	Laser Standard	White
Women's Dinghy	Laser Radial	Light Blue
Open Dinghy	Sunfish	White
Men's Skiff	49er	White
Women's Skiff	49er FX	White
Mixed Two Person Dinghy	Snipe	White
Mixed Three Person Dinghy	Lightning	White
Mixed Multihull	Nacra	White

# 12. THE START

- 12.1 The starting line will be between a staff displaying an orange flag on the race committee vessel at the starboard end and either
- The course side of the port-end inflatable starting mark, or
  - A staff displaying an orange flag on the race committee vessel at the port end.
- 12.2 [DP] A buoy may be attached to the race committee starting vessel anchor line just below keel depth. Boats shall not pass between this buoy and the race committee starting vessel at any time. This buoy is part of the race committee starting vessel ground tackle.
- 12.3 [DP] When a starting sequence is in progress, boats whose warning signal has not been made shall avoid the starting area. The starting area is defined as the area 100 meters from the starting line and marks in all directions.
- 12.4 RRS 26 and Preparatory Signals in Race Signals are deleted. Races will be started using the following signals. Times shall be taken from the display of visual signals. This changes RRS 26 and Race Signals.

Minutes before starting signal	Visual signal displayed	Visual signal removed	Sound signal	Means
10+	Orange starting line flag		One	Attention signal, race will start soon

6	Event flag P or starting penalty if required (U, or Black)		No Sound	Event to start and applicable rules
5	White flag with the number 5		One	Warning signal
4	Blue flag with the number 4	White flag	One	Preparatory signal
3	Pink flag with the number 3	Blue flag	One	Three minutes
2	Red flag with the number 2	Pink flag	One	Two minutes
1	Yellow flag with the number 1	Red flag	One long	One minute
0	Green flag	Yellow flag	One	Starting signal
+1		Green flag and Event flag, P, U or Black flag	No sound	

- 12.5 To alert boats that a race or sequence of races will begin soon, the orange starting line flag will be displayed with one sound at least five minutes before a warning signal is made.
- 12.6 The warning signal for each succeeding race will be made as soon as practicable.

## 13. COURSE CHANGES

- 13.1 To change the next leg of the course, the Race Committee will (a) lay a new mark, or (b) move the finishing line, or (c) move the leeward gate. When a new mark is laid, the original mark will be removed as soon as possible. When in a subsequent change a new mark is replaced, it will be replaced by an original mark. When mark 1 has been replaced, mark 1A will not be reset. This changes RRS 33.
- 13.2 Courses will not be shortened. This changes RRS 32.

## 14. THE FINISH

- 14.1 The finishing line will be between a staff displaying an orange flag on the race committee vessel and either:
- The course side of the nearby inflatable finishing mark, or
  - A staff displaying an orange flag on the nearby race committee vessel.



# 15. TIME LIMITS AND TARGET TIMES

15.1 For opening series, time limits and target times in minutes are as follows:

Event	Time Limit	Mark 1 Time Limit	Finish Window	Target Time
Men's Windsurfer, Women's Windsurfer	45	20	10	20-25
Men's Dinghy, Women's Dinghy, Open Dinghy, Mixed Two Person Dinghy, Mixed Three Person Dinghy	75	25	15	50
Men's Skiff, Women's Skiff, Mixed Multihull	50	20	10	30

15.2 For medal races, time limits and target times in minutes are as follows:

Event	Time Limit	Mark 1 Time Limit	Finish Window	Target Time
Men's Windsurfer, Women's Windsurfer, Men's Skiff, Women's Skiff, Mixed Multihull	40	10	10	20
Men's Dinghy, Women's Dinghy, Open Dinghy, Mixed Two Person Dinghy, Mixed Three Person Dinghy	50	15	10	25

15.3 If no boat has passed mark 1 within the mark 1 time limit the race shall be abandoned.

15.4 Boats failing to finish within the time stated in the Finish Window after the first boat sails the course and finishes will be scored Did Not Finish. This changes RRS 35, A4 and A5.

# 16. [DP] EQUIPMENT AND EQUIPMENT INSPECTION

16.1 The Technical Committee (TC) is responsible for all equipment inspection functions. The Chairman of the TC may appoint one or more panels or persons to carry out the functions of the TC. Details of equipment inspection are specified in the ER.

16.2 Snipe and Lightning shall produce a valid measurement certificate. RRS 78.2 is deleted and replaced by: When a rule requires a valid certificate to be produced or its existence verified the certificate must be produced before the boat races. If the certificate is not produced or verified before the boat



races the boat shall not be allowed to race.

- 16.3 The substitution of equipment will not be permitted unless approved by the TC in accordance with the ER. The TC will decide on requests for approval under any applicable class rules.
- 16.4 In the case of conflict between the class rules and the Equipment Regulations the later will take precedence. The Technical Committee appointed by World Sailing will have the responsibility for interpreting the class rules.
- 16.5 Any change to the ER will be posted on the Official Notice Board.

## 17. OFFICIAL BOATS

- 17.1 Official boats will be marked as follows:

Equipment Inspection	Purple Flag with "Measurer" in white
First Aid	White Flag with "Rescue" in red
Jury	Blue Flag with "Jury" in white
Marshalls/Safety	White Flag with "Marshall" in red
Media: Photo and written press	Green Flag with "Media" white
Pan American Family	White Flag with "Pan American Family" green
Principal Race Officer	White Flag with "PRO" in green
Technical Delegate	White Flag with "Technical Delegate" in green
PASAF	White Flag with "Pan American Family" green

- 17.2 Actions by official boats, drones or helicopters shall not be grounds for requesting redress by a boat. This changes RRS 60.1(b).

## 18. SUPPORT TEAMS (INCLUDING SUPPORT BOATS)

- 18.1 Support teams and support boats will be required to comply with local legislation and the rules.



# 19. [SP] [NP] IDENTIFICATION AND ADVERTISING WHILE RACING

- 19.1 When provided by the Organizing Authority, boats or competitors shall carry, display or wear the following as instructed:
- a) Bibs for all competitors;
  - b) Colored bibs for Event leaders (1st, 2nd and 3rd);
  - c) Colored dots on the mainsail for Event leaders (1st, 2nd, 3rd);
  - d) Bow number;
  - e) Pan Am Games advertising;
  - f) Cameras, camera dummies, mounts, sound equipment or positioning systems;
  - g) National letters;
  - h) Country flags on mainsails.

# 20. SCORING

- 20.1 The Low Point System of RRS Appendix A will apply, as modified herein. RRS B8 is deleted.
- 20.2 One (1) race is required to be completed to constitute a series.
- 20.3 A boat's score in the opening series will be the total of her race scores. If five or more races are completed in the opening series a boat's score in the opening series will be the total of her race scores excluding her worst score.
- 20.4 A boat starting later than 4 minutes after her starting signal will be scored Did Not Start - DNS. This changes RRS A4 and A5.
- 20.5 To request a correction of an alleged error in posted race or series results, an athlete shall complete a scoring enquiry form available at the Sports Information Desk.
- 20.6 Medal Races:



- 20.6.1 RRS A4.2 is changed so that the scores are based on the number of boats assigned in that race. A boat's score shall be double the number of points specified in RRS Appendix A4.1. The score for that medal race shall not be excluded from the series score.
- 20.6.2 For boats assigned to compete in the medal race; ties will be broken by the medal race score. This changes RRS A8. For tied boats with the same points score in the medal race, ties will be broken applying RRS A8 to the opening series scores.
- 20.6.3 The boats assigned to compete in the medal race will be ranked highest in the series, except for a boat disqualified from the medal race under RRS 5, 6 or 69.
- 20.6.4 The final score of a boat not assigned to compete in the medal race will be her final score in the opening series.
- 20.6.5 If the medal race cannot be completed the final score of all boats will be their final score in the opening series.
- 20.6.6 A boat assigned to compete in the medal race shall make a genuine effort to start, sail the course and finish. The penalty for a breach of this instruction will be ranking the boat last in the regatta. If there are two such boats, they will be ranked the last ones in the regatta, in order of their opening-series ranks, and so on. This changes RRS A2 and A5.

## 21. PROTESTS, PENALTIES AND REQUESTS FOR REDRESS

- 21.1 Protest forms are available at the jury office. Protests and requests for redress or reopening shall be delivered to the jury office within the appropriate time limit.
- 21.2 For each Event, the protest time limit after the last boat has finished the last race of the day is:

Race Area	Protest time limit in minutes
Medal Race	45
Antisuyo, Bi Suyo	60
Contisuyo	75



- 21.3 Notices will be posted within 30 minutes of the protest time limit to inform competitors of hearings in which they are parties or named as witnesses. Hearings will be held in the jury office beginning at the time posted. Hearings may be scheduled to begin up to 30 minutes before the end of protest time.
- 21.4 Notices of protests by the Race Committee, Technical Committee or International Jury will be posted to inform boats under RRS 61.1(b).
- 21.5 A list of boats that have been penalized under Appendix P for breaking RRS 42 and under Sailing Instructions 21.8 will be posted.
- 21.6 Penalties for breaches of Notice of Race 10 and 17 (Equipment Inspection & Equipment), the ER, CAR, class rules, or rules in the Notice of Race and Sailing Instructions marked [DP] or [SP] in the event of a hearing, are at the discretion of the International Jury.
- 21.7 Breaches of Notice of Race 10 (Equipment Inspection) or rules in the Sailing Instructions marked [NP] will not be grounds for a protest by a boat. This changes RRS 60.1(a).
- 21.8 For breaches of a rule marked [SP], the Race Committee or Technical Committee may apply a standard penalty without a hearing or a discretionary penalty may be applied by the International Jury with a hearing. A list of these breaches and the associated standard penalties will be posted on the Official Notice Board. However, the Race Committee or Technical Committee may protest a boat when they consider the standard penalty to be inappropriate. A boat that has been penalised with a standard penalty can neither be protested for the same incident by another boat nor can another boat request redress for this race committee action. This changes RRS 60.1, 63.1 and Appendix A5.
- 21.9 When a penalty is given under Sailing Instructions 21.6 or 21.8 before a race is started, the penalty will remain if that race is restarted or resailed. This changes RRS 36.
- 21.10 On the last scheduled day of the opening series for each Event a request for reopening a hearing shall be delivered:
- 21.10.1 within the protest time limit if the requesting party was informed of the decision on the previous day;
  - 21.10.2 no later than 30 minutes after the requesting party was informed of the decision on that day;

This changes RRS 66.

- 21.11 On the last scheduled day of the opening series for each event a request



for redress based on a protest decision shall be delivered no later than 30 minutes after the decision was posted. This changes RRS 62.2.

- 21.12 If RRS Appendix N1.4 (b) applies, the time limit for requesting a hearing under that rule is 30 minutes after the party was informed of the panel's decision.
- 21.13 Any penalty or score adjustment imposed on the day of a medal race will be notified by a notice in the launching area before Flag D is displayed for that Event, or by a notice posted on the Race Committee boat displaying Flag L.

## 22. [DP] RADIO COMMUNICATIONS

A boat shall neither make radio/data transmissions while racing nor receive radio/data communications not available to all boats, except in an emergency or when using equipment provided by race committee. This restriction also applies to mobile telephones.

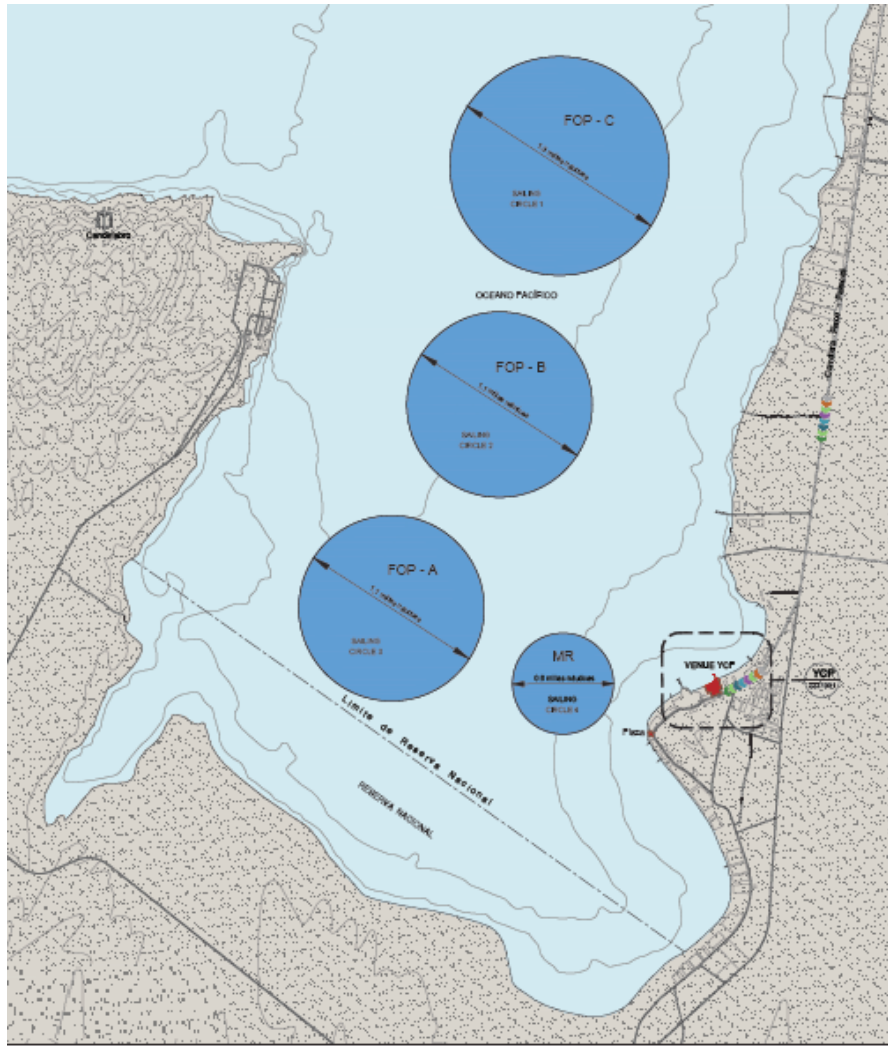
## 23. [DP] TRASH DISPOSAL

As sailors, we seek to protect and restore our oceans and coastal waters, see RRS 55. Boats shall not intentionally put trash in the water. Trash may be placed aboard support and race committee boats.





## ADDENDUM A - COURSE AREAS



AREA	Coordinates (DD ° MM.MMM')	Diameter (Miles)
Antisuyo	13° 49.700' S 76° 16.800' W	1,1
Bi Suyo	13° 48.600' S 76° 16.300' W	1,1
Contisuyo	13° 47.300' S 76° 16.000' W	1,3
Medal Race	13° 50.300' S 76° 16.100' W	0,6

# ADDENDUM C - COURSE DIAGRAMS

### I

**Course: Inner Trapezoid**

Signal	Mark Rounding Order
I2	Start - 1 - 4s/4p - 1 - 2 - 3p - Finish
I3	Start - 1 - 4s/4p - 1 - 4s/4p - 1 - 2 - 3p - Finish
I4	Start - 1 - 4s/4p - 1 - 4s/4p - 1 - 4s/4p - 1 - 2 - 3p - Finish

### O

**Course: Outer Trapezoid**

Signal	Mark Rounding Order
O2	Start - 1 - 2 - 3s/3p - 2 - 3p - Finish
O3	Start - 1 - 2 - 3s/3p - 2 - 3s/3p - 2 - 3p - Finish
O4	Start - 1 - 2 - 3s/3p - 2 - 3s/3p - 2 - 3s/3p - 2 - 3p - Finish

### IS

**Course: Inner Slalom**

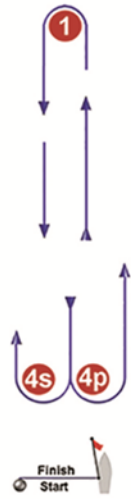
Signal	Mark Rounding Order
IS2	Start - 1 - 4s/4p - 1 - 2 - 3p - S1 - S2 - S3 - Finish
IS3	Start - 1 - 4s/4p - 1 - 4s/4p - 1 - 2 - 3p - S1 - S2 - S3 - Finish
IS4	Start - 1 - 4s/4p - 1 - 4s/4p - 1 - 4s/4p - 1 - 2 - 3p - S1 - S2 - S3 - Finish

### OS

**Course: Outer Slalom**

Signal	Mark Rounding Order
OS2	Start - 1 - 2 - 3s/3p - 2 - 3p - S1 - S2 - S3 - Finish
OS3	Start - 1 - 2 - 3s/3p - 2 - 3s/3p - 2 - 3p - S1 - S2 - S3 - Finish
OS4	Start - 1 - 2 - 3s/3p - 2 - 3s/3p - 2 - 3s/3p - 2 - 3p - S1 - S2 - S3 - Finish

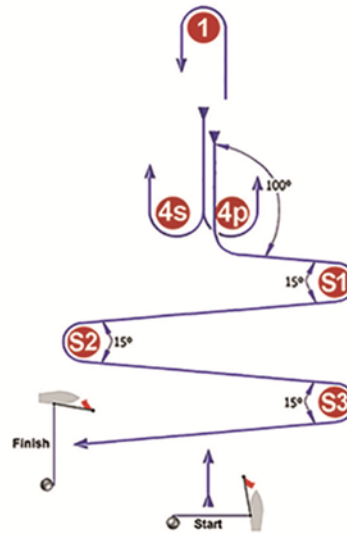
# L



Course: Windward / Leeward

Signal	Mark Rounding Order
L2	Start - 1 - 4s/4p - 1 - Finish
L3	Start - 1 - 4s/4p - 1 - 4s/4p - 1 - Finish
L4	Start - 1 - 4s/4p - 1 - 4s/4p - 1 - 4s/4p - 1 - Finish

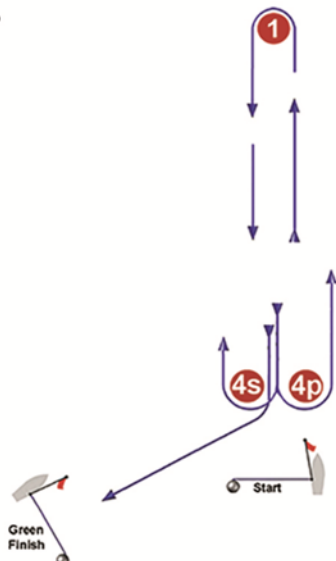
# LS



Course: Windward/Leeward With Slalom Finish

Signal	Mark Rounding Order
LS2	Start - 1 - 4s/4p - 1 - 4p - S1 - S2 - S3 - Finish
LS3	Start - 1 - 4s/4p - 1 - 4s/4p - 1 - 4p - S1 - S2 - S3 - Finish
LS4	Start - 1 - 4s/4p - 1 - 4s/4p - 1 - 4s/4p - 1 - 4p - S1 - S2 - S3 - Finish

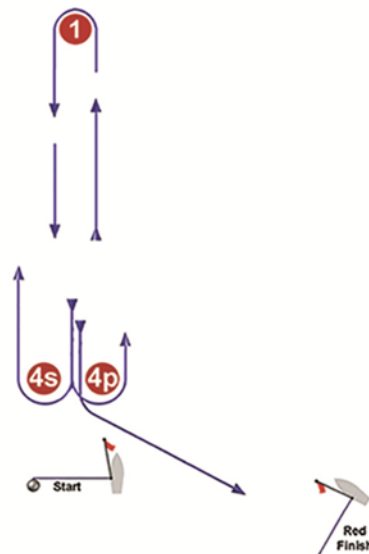
# LG



Course: Windward / Leeward

Signal	Mark Rounding Order
LG2	Start - 1 - 4s/4p - 1 - 4s - Finish
LG3	Start - 1 - 4s/4p - 1 - 4s/4p - 1 - 4s - Finish
LG4	Start - 1 - 4s/4p - 1 - 4s/4p - 1 - 4s/4p - 1 - 4s - Finish

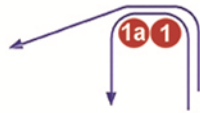
# LR



Course: Windward / Leeward

Signal	Mark Rounding Order
LR2	Start - 1 - 4s/4p - 1 - 4p - Finish
LR3	Start - 1 - 4s/4p - 1 - 4s/4p - 1 - 4p - Finish
LR4	Start - 1 - 4s/4p - 1 - 4s/4p - 1 - 4s/4p - 1 - 4p - Finish

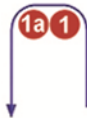
## IA



Course: Same As Course I Except with Offset Mark 1A

Signal	Mark Rounding Order
IA2	Start - 1 - 1a - 4s/4p - 1 - 1a - 2 - 3p - Finish
IA3	Start - 1 - 1a - 4s/4p - 1 - 1a - 4s/4p - 1 - 1a - 2 - 3p - Finish
IA4	Start - 1 - 1a - 4s/4p - 1 - 1a - 4s/4p - 1 - 1a - 4s/4p - 1 - 1a - 2 - 3p - Finish

## LA



Course: Same As Course L Except with Offset Mark 1A

Signal	Mark Rounding Order
LA2	Start - 1 - 1a - 4s/4p - 1 - 1a - Finish
LA3	Start - 1 - 1a - 4s/4p - 1 - 1a - 4s/4p - 1 - 1a - Finish
LA4	Start - 1 - 1a - 4s/4p - 1 - 1a - 4s/4p - 1 - 1a - 4s/4p - 1 - 1a - Finish

## LGA



Course: Same as LG Except With Offset Mark 1a

Signal	Mark Rounding Order
LGA2	Start - 1 - 1a - 4s/4p - 1 - 1a - 4s - Finish
LGA3	Start - 1 - 1a - 4s/4p - 1 - 1a - 4s/4p - 1 - 1a - 4s - Finish
LGA4	Start - 1 - 1a - 4s/4p - 1 - 1a - 4s/4p - 1 - 1a - 4s/4p - 1 - 1a - 4s - Finish

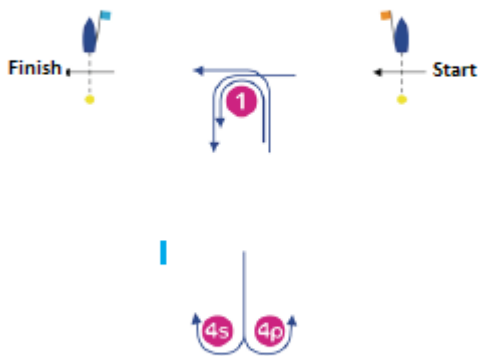
## LRA



Course: Same as LR Except With Offset Mark 1a

Signal	Mark Rounding Order
LRA2	Start - 1 - 1a - 4s/4p - 1 - 1a - 4p - Finish
LRA3	Start - 1 - 1a - 4s/4p - 1 - 1a - 4s/4p - 1 - 1a - 4p - Finish
LRA4	Start - 1 - 1a - 4s/4p - 1 - 1a - 4s/4p - 1 - 1a - 4s/4p - 1 - 1a - 4p - Finish

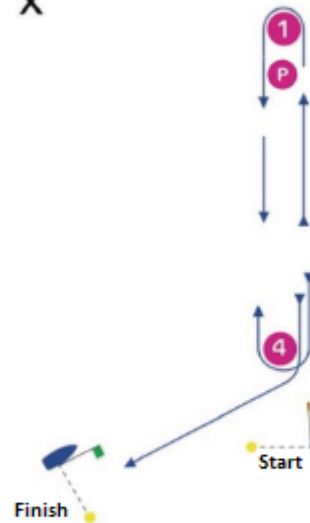
## WRS



Course: Windward/Leeward with reaching start/finish

Signal	Mark Rounding order
WRS1	Start - 1 - 4s/4p - 1 - Finish
WRS2	Start - 1 - 4s/4p - 1 - 4s/4p - 1 - Finish
WRS3	Start - 1 - 4s/4p - 1 - 4s/4p - 1 - 4s/4p - 1 - Finish

## X



Course

Signal	Mark rounding order
X1	Start - P - 1 - 4 - Finish
X2	Start - P - 1 - 4 - P - 1 - 4 - Finish
X3	Start - P - 1 - 4 - P - 1 - 4 - P - 1 - 4 - Finish

# ADDENDUM D – OPEN KITEBOARDING

## D.1 RULES

- D1.1 Add rule 62.1(e): the action of a drone, or any other flying device, significantly affecting the safety the fairness of the competition for a kiteboard.
- D1.2 In rule F. 44.2 replace "hull" with "hull appendage".

## D2. COMMUNICATIONS WITH ATHLETES

- D2.1 Signals ashore will be displayed on the official flagpole located inside their launching area, on the beach.

## D3. FORMAT OF RACING

- D3.1 The format consists of an opening series and a medal series.
- D3.2 For the opening series the number of races scheduled is as follows:

Event	Number of races	Maximum Races per Day
Open Kiteboarding	18	6

- D3.3 Medal series
- D3.3.1 A medal series will be scheduled with 5 or more opening series races completed.
- D3.3.2 After the opening series, fifty percent (0,5 rounded upward) of the best places in the opening series will proceed to the medal series.
- D3.3.3 Initial assignments to medal series will be based on the ranking available at 2000 the day before medal series. Any changes to the initial assignments will be posted by 0800 on the day of the medal series. The International Jury may extend these time limits.

## D4. EVENT FLAG

Event flag will be Kite class insignia on a white background.

## D5. THE START

- D5.1 Rule 26 and Preparatory Signals are deleted. Races will be started using the following signals. Times shall be taken from the display of visual signals. This changes RRS 26 and Race Signals.



<b>Minutes before starting signal</b>	<b>Visual signal displayed</b>	<b>Visual signal removed</b>	<b>Sound signal</b>	<b>Means</b>
8+	Orange starting line flag		One	Attention signal, race will start soon
4+	Event Flag – Starting penalty if required (U or Black)		No sound	Event to start and applicable rules
3	Pink Flag with number 3		One	Warning signal
2	Red flag with the number 2	Pink Flag	One	Two minutes
1	Yellow flag with the number 1	Red flag	One long	One minute
0	Green flag	Yellow flag	One	Starting signal
+1		Green flag and Event flag, (U or Black flag)	No sound	

## D6. TIME LIMITS AND TARGET TIMES

D6.1 For opening series, time limits and target times in minutes are as follows:

<b>Event</b>	<b>Time Limit</b>	<b>Mark 1 Time Limit</b>	<b>Finish Window</b>	<b>Target Time</b>
Open Kiteboarding	20	10	10	10

D6.2 For medal series, time limits and target times in minutes are as follows:

<b>Event</b>	<b>Time Limit</b>	<b>Mark 1 Time Limit</b>	<b>Finish Window</b>	<b>Target Time</b>
Open Kiteboarding	15	6	6	6

D6.3 If no kite has passed mark 1 within the mark 1 time limit the race shall be abandoned.

D6.4 Kites failing to finish within the time stated in the Finish Window after the first kite sails the course and finishes will be scored Did Not Finish. This changes RRS 35, A4 and A5.



## D7. SCORING

- D7.1 The Low Point System of RRS Appendix A will apply, as modified herein.
- D7.2 One (1) race is required to be completed to constitute a series.
- D7.3 A kite's score in the opening series will be the total of the race scores, excluding the worst score when 5 to 9 races are completed, two worst scores when 10 to 14 races are completed, and three worst scores when 15 and more races are completed.
- D7.4 For the medal series:
- D7.4.1 RRS A4.2 is changed so that the scores are based on the number of boats assigned to the medal series. The scores for that medal series shall not be excluded from the series score.
  - D7.4.2 For kites assigned to compete in the medal series, ties will be broken by the medal series final score. This changes RRS A8. For tied boats with the same points score in the medal series, ties will be broken applying RRS A8 to the opening series scores.
  - D7.4.3 The kites assigned to compete in the medal series will be ranked highest in the series, except for a kite disqualified from the medal series under RRS 5, 6 or 69.
  - D7.4.4 The final score of a kite not assigned to compete in the medal series will be her final score in the opening series.
  - D7.4.5 If not at least one race of the medal series can be completed, the final score of all kites will be their final score in the opening series.
  - D7.4.6 A kite assigned to compete in the medal series shall make a genuine effort to start, sail the course and finish. The penalty for a breach of this instruction will be ranking the boat last in the regatta. If there are two such boats, they will be ranked the last ones in the regatta, in order of their opening-series ranks, and so on. This changes RRS A2 and A5.
- D7.5 In all races, a kiteboard starting later than 1 minute after her starting signal will be scored Did Not Start. This changes RRS A4 and A5.

## D8. COMMUNICATION WITH COMPETITORS

- D8.1 When flag AP is displayed ashore '1 minute' is replaced with '20 minutes' in the race signal AP.
- D8.2 [SP][NP] A kiteboarding shall not leave its assigned place ashore until flag D is displayed. The warning signal will be made not less than 20 minutes after flag D is displayed or not before the schedule time, whichever is later.

