



NOTICE OF RACE

Sailing Competition August 3 - 11, 2019

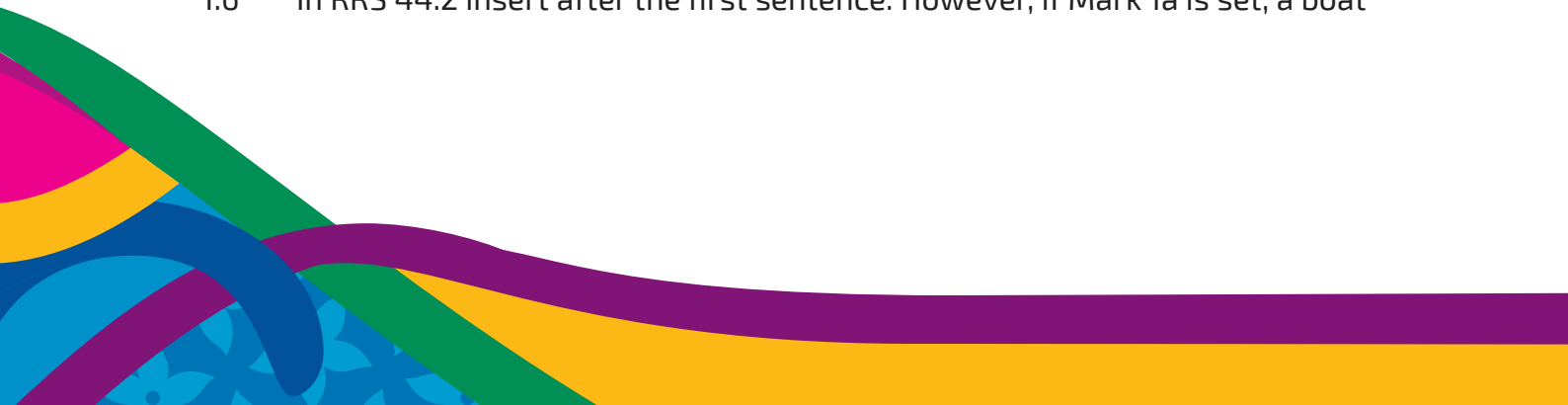
Organizing Authority: COPAL/Lima 2019
with the Pan American Sailing Federation

Incorporating Amendment n. 1, 22/05/2019:

- Section 1.1, e: Date included.
- Section 3.2: National flags for Mixed Multihull, Men's and Women's Windsurfing and Men's and Women's Skiff.
- Section 5.: Quotas updated in Men's and Women's Dinghy, Men's and Women's Skiff, Mixed Multihull and Open Kiteboarding
- Section 9.2: Inclusion of events names and Open Dinghy
- Section 10.3: Weekday fixed.
- Section 14.1: Events name added
- Section 25.1.6: Duplicates 25.1.5, deleted and renumbered the subsequent items.
- Section 27: Email address change
- Appendix C - Contacts for Charter Boats

1. RULES

- 1.1 The regatta will be governed by the rules as defined in The Racing Rules of Sailing (RRS), published by the World Sailing (WS). Other documents under RRS Definition: Rule (g) include:
 - a. The Pan American Sports Organization (PASO) Constitution.
See https://www.panamsports.org/downloads/pdf/AMENDED_CONSTITUTION_2017.pdf
 - b. The Pan American Games Regulation.
See <http://www.panamsports.org/downloads/pdf/pan-american-games-regulations-2018.pdf>
 - c. Numeric Entries Guide and Nominal Entries Guide – available at NOCs Extranet.
 - d. The Qualification System (QS) for 2019 Pan American Games Sailing Competition.
See <http://panamsailing.org>
 - e. [DP] The Lima 2019 Support Team Regulations (STR).
This document will be posted at <http://www.lima2019.pe> and <http://panamsailing.org> on or before 30 June, 2019.
 - f. [DP] [SP] The Lima 2019 Equipment Regulations (ER). This document will be posted at <http://www.lima2019.pe> and <http://panamsailing.org> on or before 31 May, 2019.
 - g. [DP] The Lima 2019 Competition Area Regulation. This document will be posted at <http://www.lima2019.pe> and <http://panamsailing.org> on or before 30 June, 2019
 - h. The Qualification System for the Tokyo 2020 Olympic Sailing Competition. See: <http://www.sailing.org/tokyo2020.php>
- 1.2 No National prescriptions will apply.
- 1.3 Class rules will apply except any class rule dealing with the conditions for organizing and running class championships shall not apply.
- 1.4 RRS Appendix P, Special Procedures for Rule 42 will apply.
- 1.5 Racing rules "Race Signal AP" and 62.2 will be changed as follows: time when displayed ashore and time limit to request, respectively. The changes will appear in full in the Sailing Instructions. The Sailing Instructions may also change other racing rules.
- 1.6 In RRS 44.2 insert after the first sentence: However, if Mark 1a is set, a boat

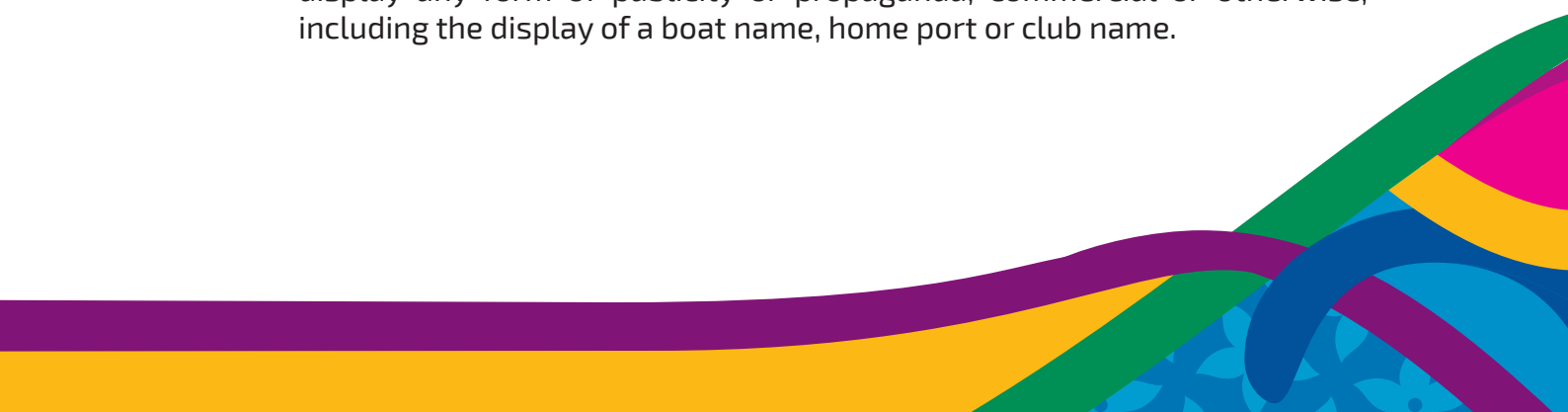


may take a penalty for an incident in the zone around Mark 1 or on the leg between Mark 1 and Mark 1A, as soon as possible after leaving the zone around Mark 1A.

- 1.7 For the Men's Skiff, Women's Skiff and Mixed Multihull, RRS 44.1 and RRS P2.1 are changed so that the Two-Turns Penalty is replaced by the One-Turn Penalty.
- 1.8 For the Kiteboarding event, any change to the rules are detailed in Sailing Instructions. If there is a conflict between the Sailing Instructions and these rules, the Sailing Instructions will take precedence.
- 1.9 For Medal races, World Sailing Addendum Q, Umpired Fleet Racing, available on the World Sailing website (<http://www.sailing.org>) website, will apply and changes a number of racing rules. A link to the version that is current when the regatta begins will appear in the Sailing Instructions.
- 1.10 In all rules governing this regatta, both "athlete" and "competitor" mean a person competing in the event.
The term "support team" means a person as defined in RRS.
- 1.11 In all rules governing this regatta:
[DP] denotes a rule for which the penalty is at the discretion of the International Jury.
[SP] denotes a rule for which a standard penalty may be applied by the Race Committee or Technical Committee without a hearing or a discretionary penalty applied by the International jury with a hearing; and
[NP] denotes a rule that shall not be grounds for protests by a boat. This changes RRS 60.1(a).
- 1.12 If there is a conflict between languages the language of the original version of the relevant document will take precedence.

2. IDENTIFICATION AND ADVERTISING

- 2.1 Clothing and equipment worn or used by athletes and support personnel shall be in compliance with Rule 50 and the Bye-laws to Rule 50 of the Olympic Charter.
- 2.2. Except as permitted by Section 3 of this Notice of Race, a boat shall not display any form of publicity or propaganda, commercial or otherwise, including the display of a boat name, home port or club name.



3. ADDITIONAL IDENTIFICATION

- 3.1 [DP] Boats, boards and Kites may be required to display "Look of the Games" logos, national country codes and flags on each side of the hull. These will be supplied by the Organizing Authority and shall be applied under its direction.
- 3.2 All boats shall arrive with a blank main and jib (where applicable) **but national flags on main sails for Mixed Multihull, Men's Windsurfing, Women's Windsurfing, Men's Skiff and Women's Skiff as specified in their class rules.** The Organizing Authority will supply all required marking for sails, which shall be applied under its direction. No other sail numbers or letters may be displayed. This changes RRS G 1.1 and Class Rules.
- 3.3 When provided by the Organizing Authority, boats or competitors shall carry, display or wear the following as instructed:
 - 3.3.1 Bibs for all competitors;
 - 3.3.2 Colored bibs for Event leaders (1st, 2nd and 3rd);
 - 3.3.3 Colored dots on the mainsail for Event leaders (1st, 2nd, 3rd);
 - 3.3.4 Bow number;
 - 3.3.5 Event advertising;
 - 3.3.6 Cameras and sound equipment; and
 - 3.3.6 [SP] Tracking and timing system equipment:
 - (a) Competitors shall collect a tracking module from their assigned tracking desk before racing each day.
 - (b) On return to shore competitors shall return the tracking module within the protest time limit to the same place that they received it.
- 3.4 [SP] For Olympic classes events, boats shall display national flags on mainsails as specified in their class rules.



4. ELIGIBILITY AND ENTRY

- 4.1 Only competitors from Member National Authorities (MNA) affiliated with National Olympic Committees (NOC) recognized by the International Olympic Committee (IOC) and the Pan-American Sports Organization (PASO) may enter the regatta.
- 4.2 Only one boat per event per NOC may enter, subject to the qualification system established by the Pan American Sailing Federation (PASAF) and published by Lima 2019, and the maximum number of competitors identified in the XVIII Pan-American Games Lima 2019 Technical Manual for Sailing.
- 4.3 The World Sailing eligibility requirements shall apply. Each competitor shall be registered as a WS Sailor on the WS website.
- 4.4 Competitors may represent an NOC only if eligible to represent that NOC under IOC nationality rules. IOC nationality rules shall apply to all members of the crew. Each competitor shall present proof of nationality at the time of registration.

5. EVENTS AND QUOTAS

There shall be competition in the following events and classes:

Event	Class	Host NOC	Other NOC	Quotas
Men's Windsurfing	RS:X	1	7	8
Women's Windsurfing	RS:X	1	7	8
Men's Dinghy	Laser Standard	1	21	22
Women's Dinghy	Laser Radial	1	17	18
Open* Dinghy	Sunfish	1	12	13
Men's Skiff	49er	1	7	8
Women's Skiff	49er FX	1	4	5
Mixed** Two Person Dinghy	Snipe	1	9	10
Mixed** Three Person Dinghy	Lightning	1	6	7
Mixed** Multihull	Nacra 17	1	10	11
Open* Kiteboarding	Formula Kite	1	9	10
Total		11 boats	109 boats	120 boats

*Open means that the crew may be all male, all female, or a combination of the two.

**Mixed means that the crew must include at least one male and at least one female.

6. REGISTRATION – DEADLINES FOR ENTRY-BY-NUMBER AND ENTRY-BY-NAME

- 6.1 Sport Entries is the name of the official registration process for athletes selected and qualified to participate in the Lima 2019 Pan American Games. It is the responsibility of the National Olympic Committee (NOC) to decide upon the entry of athletes proposed by their respective National Federations (NF) and to ensure that such entries comply with the qualification standards established by the International Federation (IF), as well as the provision of the Pan American Sports Organization (PASO) statute and the Pan Am Regulations. Specific details of how athletes are entered into each event can be found in the Lima 2019 Entries by Number Guide and the Lima 2019 Entry by Name Guide, both available at NOCs Extranet.
- 6.2 The final date for NOCs to confirm is:
Confirmation of events/numbers: 26, April 2019, before 5:00 pm ET (10:00 UTC)
Confirmation of athlete's names: 26, June 2019, before 5:00 pm ET (10:00 UTC)
Confirmations to the Secretary-General of PASAF at hagedornFH@gmail.com and COPAL to Mr. José Elias at jelias@lima2019.pe.
- 6.3 By the act of entering, all participants agree to be bound by the RRS and by all other rules that govern this event.

7. ON-SITE ENTRY CONFIRMATION

Athletes, coaches and team leaders shall submit the on-site entry confirmation form at the Race Office between 0800 - 1800 hours from 29 July to 01 August, 2019, and between 0800-1500 hours on Friday, 02 August, 2019, prior to the start of their respective measurement process.



8. FORMAT

- 8.1 The competition for all events except the Formula Kite will consist of an opening series of races followed by a medal race. The competition in the Formula Kite event will consist of an opening series of races followed by a series of three medal races.
- 8.2 After the opening series, the five best places in all the events, except Laser Standard, Laser Radial, Formula Kite and Sunfish, will continue towards the medal race/medal series. Fifty percent (rounded) of the best places in the opening series of the Laser Standard, Laser Radial, Formula Kite and Sunfish events will proceed to the medal race/medal series.

9. SCHEDULE

- 9.1 The schedule is as follows:

Date	Time	
29 July	0900	Venue opens
29 July - 01 August	0800 - 1800	Athlete and support team/boat registration
	1000 - 1800	On-water training
31 July - 01 August	0900 - 1800	Equipment Inspection
02 August	0900 - 1000	Team leaders and officers meeting
	0900 - 1500	Equipment Inspection
		Athlete and support team registration
1000 - 1800	On-water training	
03 - 08 August	1000 - 1030	Daily team leaders meeting
	1130*	Opening series races. Time of first warning
09 August	1000 - 1030	Team leaders/coaches meeting
	1130* - 1700	Medal Races for RS:X (M), RS:X (F), 49er, 49erFX, Nacra 17, Laser Standard and Laser Radial
		Reserve day for opening series races for Sunfish, Snipe, Lightning and Formula Kite
	1700 - 1800	Medal Ceremonies

10 August	1000 - 1030	Team leaders/coaches meeting
	1130* - 1700	Medal Race for Sunfish, Snipe, Lightning and Medal Series for Formula Kite Reserve day for Medal Races of RS:X (M), RS:X (F), 49er, 49erFX, Nacra 17, Laser Standard and Laser Radial
	1700 - 1800	Medal Ceremonies
11 August	1000 - 1030	Team leaders/coaches meeting
	1130* - 1700	Reserve day for Medal Race for Sunfish, Snipe, Lightning and Medal Series for Formula Kite

* The Organizing Authority may reschedule a warning signal to earlier than 1130. The Sailing Instructions will define this process.

9.2 Number of races, races per day **and target** times will be as follows:

Class	Number of Races	Races per day (max per day)	Target Times opening series (min.)	Target Times Medal Race (min.)
Men's Windsurfing	12 + Medal Race	3 (3)	20-25	20
Women's Windsurfing	12 + Medal Race	3 (3)	20-25	20
Men's Dinghy	10 + Medal Race	2 (3)	50	25
Women's Dinghy	10 + Medal Race	2 (3)	50	25
Open Dinghy	10 + Medal Race	2 (3)	50	25
Men's Skiff	12 + Medal Race	3 (4)	30	20
Women's Skiff	12 + Medal Race	3 (4)	30	20
Mixed Two Person Dinghy	10 + Medal Race	2 (3)	50	25
Mixed Three Person Dinghy	10 + Medal Race	2 (3)	50	25
Mixed Multihull	12 + Medal Race	3 (4)	30	20
Open Kiteboarding	18 + Medal Series (3 races)	6 (6)	10	6

- 9.3 The Sailing Instructions will define the process for the publication of the daily schedule, including the allocation of events to course areas.
- 9.4 No warning signal will be made after 1630 on August 8 or August 9 for an opening series race or a medal race. No warning signal will be made after 1630 on August 11 for a medal race.
- 9.5 All boats (including support boats) must be on site by end of day, July 29th 2019.

10. EQUIPMENT INSPECTION

- 10.1 Snipes and Lightnings shall produce a valid measurement certificate. RRS 78.2 is deleted and replaced by: When a rule requires a valid certificate to be produced or its existence verified the certificate must be produced before the boat races. If the certificate is not produced or verified before the boat races the boat shall be disqualified from all races of the event.
- 10.2 This event is an international event for the purpose of RRS G1.1.
- 10.3 A schedule of times when boats, crew and equipment must be presented for measurement will be posted no later than 1700 hours on **Monday**, July 29th, 2019. Failure on the part of a competitor and his or her boat or equipment to be available for measurement at the required time may result in the competitor not being able to compete in one or more races. A competitor may not be eligible to compete until measurement is officially completed.
- 10.4 The procedures for inspection, limitations on equipment permitted in the venue and other equipment related matters will be specified in the Sailing Instructions or the ER.
- 10.5 After equipment inspection, no boat or inspected equipment shall be taken from the boat park or the racing areas and their adjacent waters without written permission of the Organizing Authority.
- 10.6 Only entered competition boats may be kept in the venue boat park unless permission is granted by the Organizing authority.

11. SAILING INSTRUCTIONS

The Sailing Instructions will be available after July 1st, 2019, posted at <http://panamsailing.org>.



12. VENUE AND COURSE AREA LOCATIONS

- 12.1 Appendix A shows the location of the venue.
- 12.2 Access to the Sailing Venue will be restricted to accredited athletes and support personnel.
- 12.3 Access to the spectator place adjacent to the Medal Races is open to the public and does not require accreditation.
- 12.4 The racing area will be in Paracas bay, race areas location are shown in Appendix B. However, racing may also be moved to other locations within an exclusion zone.

13. THE COURSES

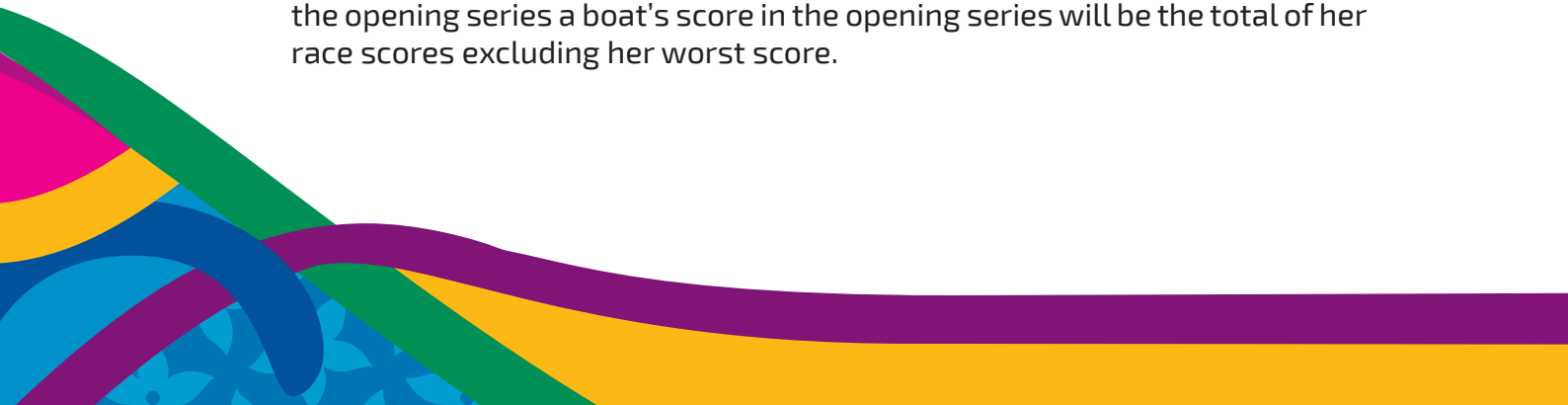
The courses will be Windward/Leeward or Trapezoid courses except that for the Formula Kite that will be an "X" course.

14. PENALTY SYSTEM

- 14.1 For the **Men's Skiff, Women's Skiff, Mixed Multihull rule** 44.1 is changed so that the One-Turn Penalty replaces the Two-Turns Penalty.
- 14.2 Decisions of the International Jury will be final as provided in RRS 70.5.

15. SCORING

- 15.1 The Low Point System of RRS Appendix A will apply, as modified herein. RRS B8 is deleted.
- 15.2 One (1) race is required to be completed to constitute a series.
- 15.3 A boat's score in the opening series will be the total of her race scores, with the following discards:
 - 15.3.1 All classes but Formula Kite: if five or more races are completed in the opening series a boat's score in the opening series will be the total of her race scores excluding her worst score.



15.3.2 Formula Kite:

Races Completed	Discards
Less than five	No discard
Five to nine	The worst score discarded
Ten to fourteen	Two worst scores discarded
Fifteen or more	Three worst scores discarded

- 15.4 Except for Formula Kite, in the Medal Races, a boat's score shall be double the number of points specified in RRS Appendix A4.1. For all classes, Formula Kite included, the score(s) for that medal race/medal series shall not be excluded from the series score.
- 15.5 The boats assigned to compete in the medal race/medal series will be ranked highest in the series, except for a boat disqualified from the medal race/medal series under RRS 5, 6 or 69.
- 15.6 The final score of a boat not assigned to compete in the medal race/medal series will be her final score in the opening series.
- 15.7 If the medal race cannot be completed or at least one of the medal race series, the final score of all boats will be their final score in the opening series.

16. SUPPORT BOATS

- 16.1 A support boat includes any boat that is under the control or direction of a person who is providing physical or advisory support to an athlete, including the gathering of data that may be used at a later time.
- 16.2 Each National Olympic Committee is permitted to register a maximum of one support boat per group of classes in which it has at least one boat competing, as follows:

Group	Classes	Number of support boats per NOC
1	49er, 49er FX, RS:X (M), RS:X (F)	One
2	Laser Standard, Laser Radial, Sunfish, Formula Kite	One
3	Nacra 17, Lightning, Snipe	One

- 16.3 The Organizing Authority may, at its discretion, refuse coach boats entry to the venue if they are deemed unsuitable. Generally, open boats less than 7.6 meters in length, having minimal or no superstructure (cabin, coach house, bridge etc.), will be considered suitable. Only support boats using

four stroke or DFI (Direct Fuel Injection) two stroke engines will be allowed in the venue or inside the Field of Play.

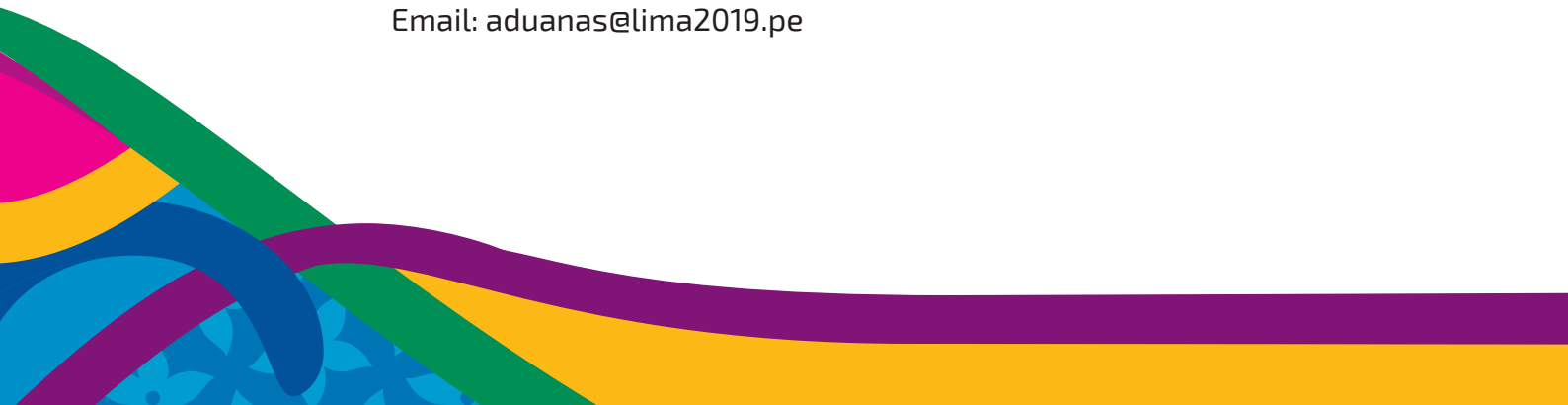
- 16.4 All support boats must be pre-registered with Lima 2019 (apeschiera@lima2019.pe) no later than July 26, 2019. NOCs wishing to charter a support boat shall make arrangements independently of the Organizing Authority. Please refer to the list of 'Contacts for Charter Boats' in Appendix C.
- 16.5 All support boats shall be registered at the Race Office no later than 1500 hours on Friday, August 02th, 2019. A registration fee of U\$D 200 for each support boat has to be paid at registration, in cash only. This fee is waived if that support boat is shared by two or more countries.
- 16.6 All registered boats must comply with the Lima 2019 Support Team Regulations. Limitations of equipment that may be carried and mandatory equipment that shall be carried on support boats will be confirmed in the Lima 2019 Support Team Regulations.
- 16.7 [DP] Support boats shall display the country code(s) of the country/countries on board at all times while on the water. Identification will not be provided by the Organizing Authority.

17. EQUIPMENT

Each competitor and MNA is responsible for providing their own boat and equipment for competition. Competitors and MNA's wishing to charter a boat for competition shall make all arrangements independently of the Organizing Authority. Please refer to the list of 'Contacts for Charter Boats' in Appendix C.

18. LOGISTICS – TRANSPORT

- Logistics Operator Company: Waiver Logistics Peru S.A.C.
Contact: Luis Guerrero
General Manager
luis.guerrero@waiverlog.com
Phone: +51 979890012
- For additional information contact:
Lima 2019 Logistics
Email: aduanas@lima2019.pe



19. [DP] BERTHING

Boats shall be kept in their assigned places while they are in the Regatta Venue.

20. COMMUNICATION

Except in an emergency, a boat shall neither make voice or data transmissions while racing nor receive voice or data communications not available to all boats. This restriction also applies to mobile telephones.

21. PRIZES

Medals will be awarded to the top three boats in each event. Diplomas will be awarded to the fourth to eighth place finishers in each event.

22. DOPING CONTROL

- 22.1 During the period of the Pan American Games, which starts on 29 July and ends on 11 August, the IOC Anti-Doping Rules (compliant with the World Anti-Doping Code and the mandatory International Standards) will apply.
- 22.2 COPAL will be authorized to collect samples on behalf of the IOC. The doping control station will be located inside the sailing venue.

23. [DP] MEDIA RIGHTS

- 23.1 By participating in the event athletes and support teams automatically grant to the Organizing Authority, their sponsors, World Sailing and Pan American Sailing Federation the right in perpetuity to make, use and show, from time to time at their discretion, any motion pictures and live, taped or filmed television and other reproductions of the athlete during the period of the competition without compensation.



- 23.2 Boats may be required to carry cameras, camera dummies, mounts, sound equipment or positioning systems as specified by the Organizing Authority.
- 23.3 Athletes may be required to pass through the mixed zone on return to shore after racing.
- 23.3 All medalists shall be required to attend a media conference after the medal race. Athletes may also be required to attend a media conference at the end of the day's racing.
- 23.4 Athletes may also be asked to be available for interviews outside the formal mixed zone and media conferences, on either training or competition days.

24. CODE OF CONDUCT

- 24.1 Competitors and support team shall comply with any reasonable request from a regatta official.
- 24.2 [SP] Boats not racing shall avoid the area where boats are racing and of any official boats.
- 24.3 [SP] Boats that are on a Course Area to which they are not assigned shall remain clear of the area where boats are racing and any official boat.

25. DISCLAIMER OF LIABILITY

- 25.1 Competitors and support team members participate in the series entirely at their own risk and they are reminded of the provisions of RRS 4, Decision to Race. Sailing is, by its nature, an unpredictable sport and therefore inherently involves an element of risk. By taking part in the event, each competitor and the responsible adult agrees and acknowledges that:
 - 25.1.1 They are aware of the inherent element of risk involved in the sport and accept responsibility for the exposure of themselves and their boat to such inherent risk whilst taking part in the event;
 - 25.1.2 They are responsible for the safety of themselves, their boat and their other property whether afloat or ashore;
 - 25.1.3 They accept responsibility for any injury damage or loss to the extent caused by their own actions or omission;
 - 25.1.4 Their boat is in good order, equipped to sail in the event, and they are fit to participate;



- 25.1.5 The provision of a race management team, patrol boats and other officials and volunteers by the event organiser does not relieve them of their own responsibilities;
- 25.1.6 The provision of a race management team, patrol boats and other officials and volunteers by the event organiser does not relieve them of their own responsibilities;
- 25.1.7 The provision of patrol boat cover is limited to such assistance, particularly in extreme weather conditions, as can be practically provided in the circumstances;
- 25.1.8 It is their responsibility to familiarize themselves with any risks specific to the venue or this event drawn to their attention in any rules and information produced for this venue or event, and to attend any safety briefings held for the event.

26. [NP] INSURANCE

- 26.1 Each person in charge (see RRS 46) shall hold a valid insurance certificate showing proof of third-party liability coverage of at least U\$D 500,000 (or equivalent) per incident.
- 26.2 Each support boat shall have valid insurance including third party liability coverage of at least US\$ 500,000 (or equivalent) per incident.
- 26.3 The Organizing Authority is not responsible for verifying the status of certificates.

27. FURTHER INFORMATION

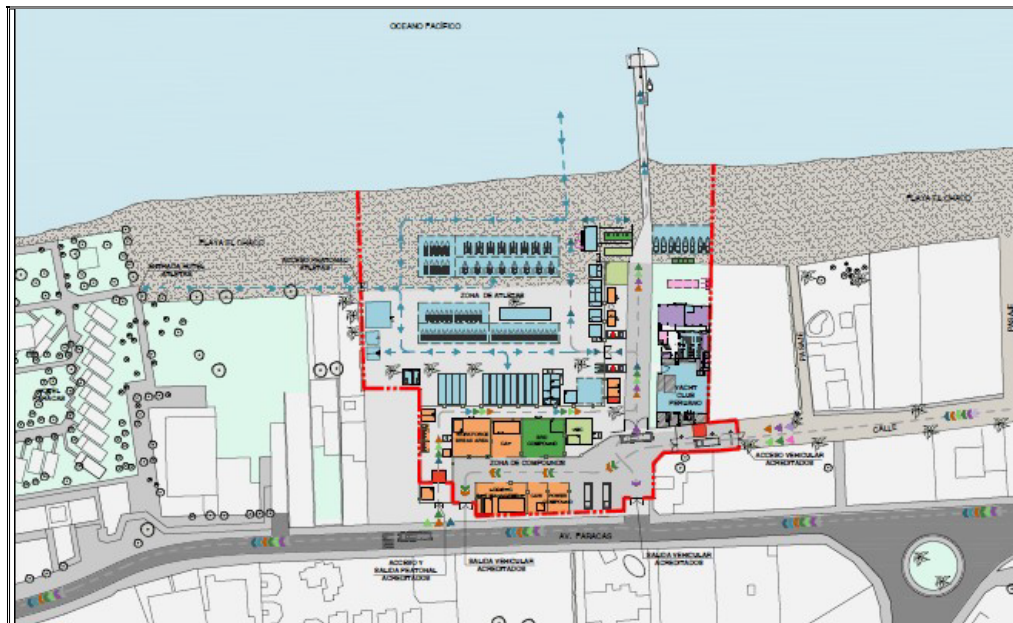
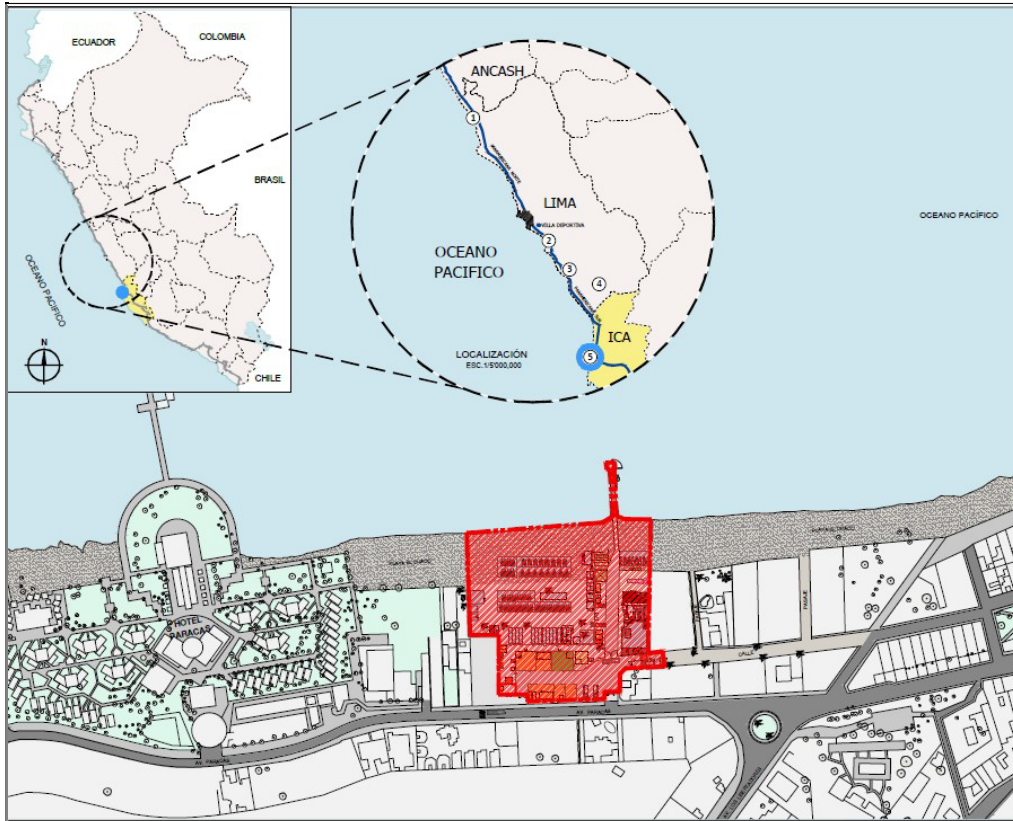
For further information please contact Lima 2019:

Sailing Manager
Adriana Peschiera
Email: apeschiera@Lima2019.pe

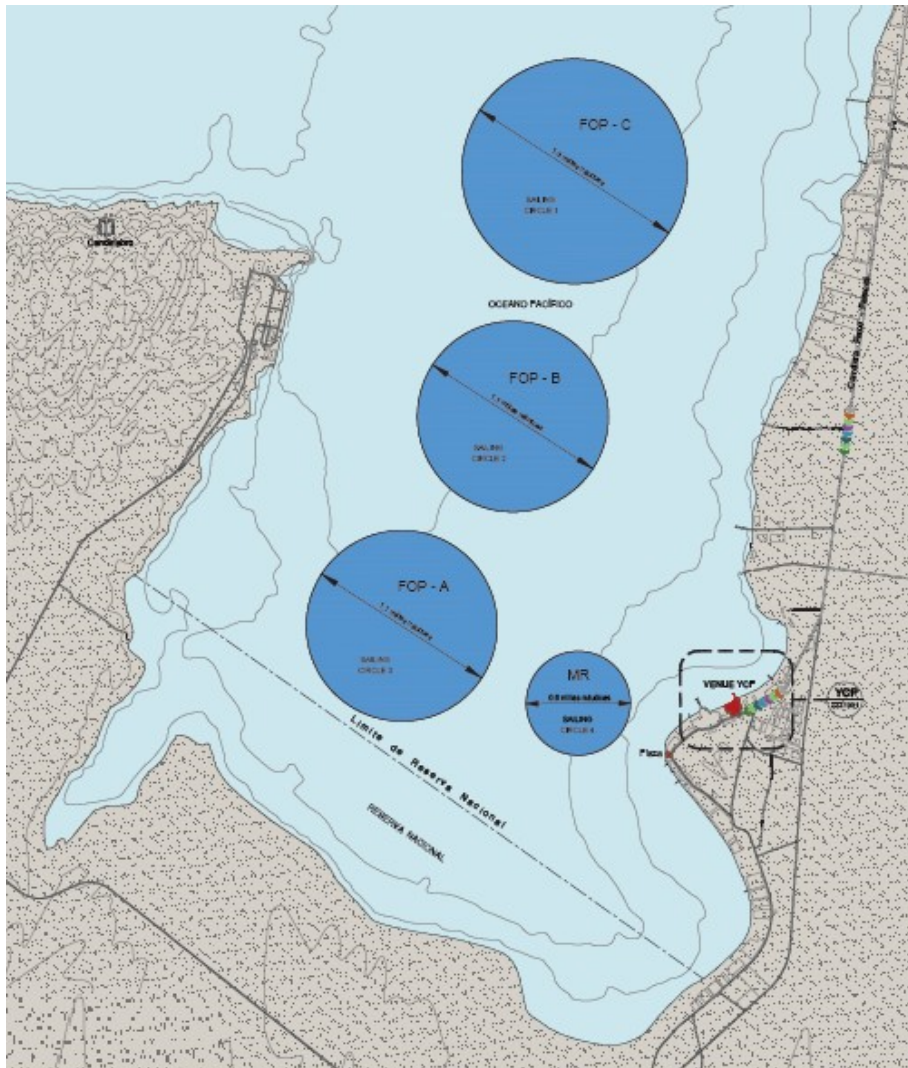


28. APPENDIX

APPENDIX A – VENUE LOCATION



APPENDIX B – RACE AREAS LOCATION



AREA	Coordinates (DD ° MM.MMM')	DIAMETER (Miles)
Antisuyo	13° 49.700' S 76° 16.800' W	1,1
Bisuyo	13° 48.600' S 76° 16.300' W	1,1
Contisuyo	13° 47.300' S 76° 16.000' W	1,3
Medal Race	13° 50.300' S 76° 16.100' W	0,6

APPENDIX C – CONTACTS FOR CHARTER BOATS

Class	Contact Person	Email	Phone
Lightning	Jaime Calderon	Jcalderon@gye.sat.net pinchocalderon@gmail.com	+51 997 512 353
Snipe	Diego Figueroa	diegofigueroa@hotmail.com	+51 965 408 275
Sunfish	Estuardo Desmaison	edesmaison@sailingperu.org	+51 975 202 553
Support boats	Estuardo Desmaison	edesmaison@sailingperu.org	+51 975 202 553

